

 Tina's Wish

LEADERSHIP COUNCIL
presents

RUNWAY
for
RESEARCH

Tuesday, June 10, 2025 at 6 PM • Chelsea Industrial (282 11th Ave, NYC)

The Honorable Tina Brozman Foundation, Tina's Wish, was founded in 2008 in memory of the Honorable Tina Brozman, former chief judge of the SDNY Bankruptcy Court.

Tina's Wish funds **innovative scientific research** for the **early detection and prevention of ovarian cancer**, and provides critical **gynecologic health education**.

Know Early. Know Hope®. This is our mission.

Families deserve to know earlier and have a fighting chance against ovarian cancer. Together we can make Tina Brozman's wish for early detection a reality.

IMPACT SINCE 2008

- ***\$29 million raised for 60 scientific research projects focused on early detection and prevention of ovarian cancer.***
- ***Our education and awareness platforms impacted over 300,000 individuals.***



“I am not angry about having ovarian cancer. I am angry that I did not know sooner so I could have a fighting chance.”

- TINA BROZMAN, 1952-2007

Jurist · Wife · Mother · Daughter · Sister · Friend

THE NEED

OVARIAN CANCER is the **#1** deadliest gynecologic cancer, largely because there is **NO** effective early detection test




80% of women are diagnosed with **OVARIAN CANCER** at advanced stages

The **5-YEAR** survival rate at an advanced stage is only **27%** compared to a **93%** **5-YEAR** survival rate when diagnosed in **STAGE 1**

YOUR SUPPORT

Makes **13 CUTTING-EDGE** research projects focused on **OVARIAN CANCER** early detection possible in 2024 & 2025



Enables us to empower and educate **300K+** people about their gynecologic health



Enables **1,500+** women to participate in our funded researchers' clinical trials annually



Creates the potential to save **200,000** women's lives globally per year upon completion of identifying or creating an early detection screen.



2024-25 GRANTS

\$2.4 Million in Annual Grant Funding

AREAS THAT OUR SCIENTISTS ARE EXPLORING:

Biomarker Discovery
Circulating MicroRNA Signatures
Artificial Intelligence & Machine Learning
Epigenetics
Genomics
Nanotechnology

\$150K

awarded for each Rising Star Grant over two years

100%

focus on early detection & prevention



2 Rising Star Grants



4 Clinical Studies

Collaborative Network comprised of **15** Institutions and **31** Researchers

\$400K

awarded for each Team Science Grant over two years

11

Team Science Grants

To learn more about our research, visit tinaswish.org/grant-information/



GRANTEES



COLUMBIA UNIVERSITY
MEDICAL CENTER



Dana-Farber
Cancer Institute



JOHNS HOPKINS
MEDICINE

UPMC
LIFE CHANGING MEDICINE

THE UNIVERSITY OF TEXAS
MDAnderson
Cancer Center
Making Cancer History®



Memorial Sloan Kettering
Cancer Center



Massachusetts
Institute of
Technology



Penn Medicine



UCLA Health
Hematology Oncology

THE UNIVERSITY OF KANSAS
CANCER CENTER

MICHIGAN MEDICINE
UNIVERSITY OF MICHIGAN

UTSouthwestern
Medical Center



VCU



What to Know Down Below™ Educational Initiatives



LUNCH & LEARNS



**SIGNS & SYMPTOMS
POSTCARDS**



PODCASTS



SOCIAL MEDIA



LAB TOURS



**EDUCATIONAL
PROGRAMMING**



What to Know Down Below™ Podcast Series

Tina's Wish

OUR PODCAST



The Tina's Wish **What to Know Down Below™** podcast covers a variety of gynecologic health topics and features subject matter experts and incredible speakers. Build your gynecologic health toolkit, hear powerful stories and arm yourself with the knowledge you need to be a fierce self-advocate!



SOME OF OUR EPISODES:



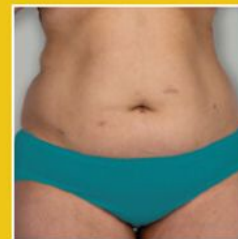
Ovarian Cancer Facts & Figures



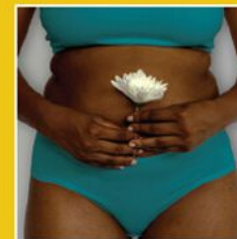
How to Advocate for Yourself as a Patient



The Role Genetics Plays in Gynecologic Cancers



Disparities in Gynecologic Cancers



Gynecologic Cancers: Facts & Differences

[**CLICK HERE TO LISTEN!**](#)

RUNWAY FOR RESEARCH

Runway for Research is more than just a fashion show. It is an unforgettable evening of storytelling and fashion, where guests will learn about the heart behind our mission. Brave ovarian cancer warriors, family members, researchers and doctors will walk the runway as our incredible models! This inspiring event brings our community together to honor their stories and the fight against ovarian cancer.



The goal of *Runway for Research* is to fully fund two Rising Star Grants. To do this, we need to raise **\$450,000**. Our Rising Star Grants are awarded to talented early-stage researchers with innovative ideas and new approaches to developing ovarian cancer early detection. Our seed funding can have a huge impact on their ability to show demonstrative results and ultimately receive large federal grants to get them to the next level.

MEET A PAST RECIPIENT

Maria Sol Recouvreux, PhD

UCLA

“Tina’s Wish seed funding enabled me to gain the resources to demonstrate preliminary results **that led to \$1.8mm from federal funders.**”



DESIGNERS & BRANDS

Designers and brands that have dressed our models!

A R E A **BATSHEVA**

~~THE
DANES
NEW YORK~~



LOVESHACKFANCY

MIRROR PALAIS
Mirrored
NEW YORK

MPR
MEGHAN PATRICE RILEY

RINAT  BRODACH

Theory

Join us in giving women and their families a fighting chance against ovarian cancer.

Spotlight Sponsor

\$15,000	Admission for twenty (20) guests	Premier social media recognition (8 posts)	Naming opportunity: Bar	Printed recognition on hard copy invite	Two (2) tickets to the Annual Gala on September 30, 2025
----------	----------------------------------	--	-------------------------	---	--

Fashionista Sponsor

\$10,000	Admission for fifteen (15) guests	Social media recognition (6 posts)	Naming opportunity: Food station	Printed recognition on hard copy invite	
----------	-----------------------------------	------------------------------------	----------------------------------	---	--

Trendsetter Sponsor

\$5,000	Admission for ten (10) guests	Social media recognition (3 posts)			
---------	-------------------------------	------------------------------------	--	--	--

Dressed to Impress Sponsor

\$2,500	Admission for five (5) guests	Social media recognition (1 post)			
---------	-------------------------------	-----------------------------------	--	--	--

Glitter Sponsor

\$1,500	Admission for two (2) guests				
---------	------------------------------	--	--	--	--

Individual Tickets: \$300



All our sponsors will receive logo recognition on:

Tina's Wish website

Electronic invitation sent to more than 3,500 individuals & companies

Evening's program distributed to 400+ guests

Onsite digital & print signage

Please contact Olivia Maloney,
omaloney@tinawish.org,
with any questions.

OTHER WAYS TO MAKE AN IMPACT!

We need your help dressing our fashion show participants, showcasing the latest summer/fall trends, and making *Runway for Research* a success!

IN-KIND DONATIONS WE ARE SEEKING:

◆ Raffle & Silent Auction items:



FASHION GIFT CARDS



HANDBAGS



JEWELRY



ACCESSORIES



BEAUTY PRODUCTS



SKINCARE



FRAGRANCE



CANDLES

◆ Silent Auction experiences:



SHOW TICKETS



MEET AND GREET WITH A DESIGNER



FINE DINING

*Silent Auction items & experiences must have a retail value of \$500+

In-kind donation sponsors will receive logo placement on:

Tina's Wish website • Electronic & print invitation sent to more than 3,500 individuals & companies
(*deadline to be included in print invitation is March 15th*) • Evening's program distributed to 300+
guests • Onsite digital & print signage



FOR MORE INFORMATION, PLEASE CONTACT:

Olivia Maloney, Senior Associate, Events & Communications, omaloney@tinaswish.org

Caroline Wilson, Director, Events & Communications, cwilson@tinaswish.org

Beverly Wolfer, Executive Director, bwolfer@tinaswish.org

Thank You!

tinaswish.org/runway25